

# Community Newsletter



**Suzanne Quesnel-Gauthier**  
Chair of the Board of Directors

## WORD FROM THE CHAIR OF THE BOARD OF DIRECTORS

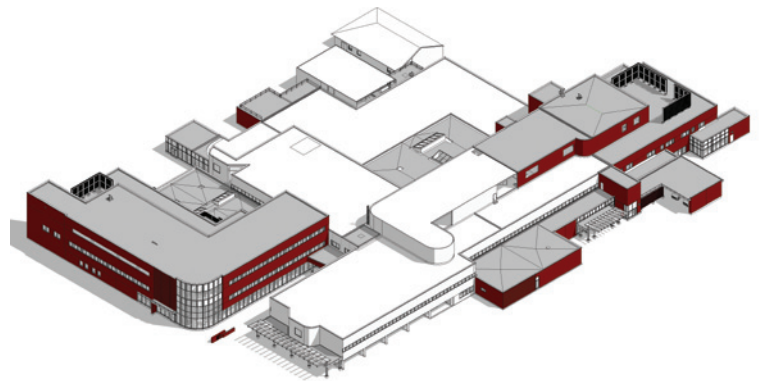
### Towards a new beginning

The Hawkesbury & District General Hospital's vision to improve access to health care in Prescott-Russell continues to take shape with the exterior construction activity that began in August 2014.

Over the next four years, the \$160 million in infrastructure and equipment will transform HGH to a full-service regional hospital with more beds, better facilities and new state-of-the-art equipment.

Throughout our major redevelopment project, HGH is committed to offering quality and accessible care, close to home, for our community.

**Suzanne Quesnel-Gauthier**



## A NEW HOSPITAL IN 2017-2018

 Renovated building

 New construction



## CONSTRUCTION UPDATE

To the east of the hospital, the majority of the exterior work has been to install the important and necessary underground utilities including water main, oxygen, electrical and gas lines.

In our west parking lot, you can see the large crane working on the concrete foundation for the new ambulatory care pavilion. This three-storey building will accommodate our specialty clinics including outpatient rehabilitation, hemodialysis, cardiology and medical day care unit.



## SNAPSHOT OF THE NEW HGH

- 100 beds for acute, intensive and psychiatric inpatient care
- Expansion of the Emergency with 3 times more space and a new trauma unit
- New surgical unit with 4 operating rooms, endoscopy and minor surgery areas
- New family birthing centre with 7 labour specialization rooms
- Outpatient and ambulatory care building for specialty clinics and regional services, including rehabilitation, hemodialysis and cardiology
- Enhanced diagnostic imaging with new MRI and CT Scan
- New psychiatric inpatient and day care unit

## SPECIAL THANKS!



On November 16<sup>th</sup>, the HGH Foundation's 10<sup>th</sup> Radiotelethon raised \$306,088 in support of a new CT scanner. When a group of individuals and businesses who share a common goal come together, great things happen!

We never know when we will need to come to the hospital or when a loved one or friend will use one of HGH's specialized services located in Hawkesbury, Casselman or Clarence-Rockland. When that need occurs, it's nice to know that we've done what we can to have the latest medical equipment and best facilities available to us.

The Foundation thanks all who gave their time, talent or financial support in making the Radiotelethon a success. The funds will help to provide quality health care close to home.



**Happy Radiotelethon hosts, entertainers and volunteers**  
Christian Marc Gendron, Manon Séguin, Jonathan Roy, Dany Bédar and a member of his group, Tanya Lapointe, Yves Chabot and Bobby Lalonde



## NEW DIAGNOSTIC IMAGING PROGRAM AT HGH

Diagnostic imaging is now widely used in many situations. HGH offers a range of services in diagnostic imaging and introduced the CT scan in 2004. Since then, 45,000 residents benefited from this service in their community, without having to travel to Ottawa.

With its major redevelopment project, HGH will offer complete diagnostic imaging services, including magnetic resonance imaging (MRI). There is a high demand for MRI from the Prescott-Russell community.

### What is diagnostic imaging?

Diagnostic imaging is a set of images of the human body obtained using different techniques such as radiology, bone densitometry, mammography, ultrasound, CT scan and MRI. Diagnostic imaging is used to diagnose chronic illnesses and cancers, assist in surgery and assess the severity of a disease or the effectiveness of treatment. In the emergency room, it is used to assess the condition of patients with severe trauma, stroke or severe pain.

### What is HGH's new diagnostic imaging program?

In 2017, the new HGH will offer comprehensive services in diagnostic imaging, including a new CT scanner and magnetic resonance imaging (MRI).

CT scan and MRI are the best technologies to detect tumors and to diagnose several types of cancers (liver, lung, brain, pancreas). They can also detect anomalies and infections of organs (liver, uterus, ovaries), cerebral aneurysms, nerve damage, hearing and vision problems. The CT scan is essential for monitoring radiation and chemotherapy treatments.

Prescott-Russell residents will benefit from state-of-the-art technology and reduced wait times.

To better serve you

**100 PHYSICIANS**  
**600 EMPLOYEES**  
**100 VOLUNTEERS**

## CONTACT | HAWKESBURY & DISTRICT GENERAL HOSPITAL

### MAIN CAMPUS

1111 Ghislain Street, Hawkesbury, ON K6A 3G5  
T 613-632-1111

### MENTAL HEALTH TREATMENT SERVICE

444 McGill Street, Hawkesbury, ON K6A 1R2  
T 613-632-0139 | 1-877-616-0139

### CASSELMAN SATELLITE CENTRE

710 Principale Street, Casselman, ON K0A 1M0  
T 613-764-5464 | 1-866-742-8371

### PRESCOTT-RUSSELL ADDICTION SERVICES

480 McGill Street, Hawkesbury, ON K6A 1R2  
T 613-632-1415 | 1-855-624-1415

### CLARENCE-ROCKLAND SATELLITE CENTRE

1905 Laurier Street, Rockland, ON K4K 0C6  
T 613-446-6776 | 1-877-616-0139

### CHILDREN REHAB CLINIC

352 Main West, Hawkesbury, ON K6A 2H8  
T 613-632-1111 | 1-800-790-8870